

**BUSHELL'S
BERMUDA
HANDBOOK
1925**

16TH EDITION

29

The Bermuda and Garrison Hunt Club



RACES

on the

Shelly Bay Race Course

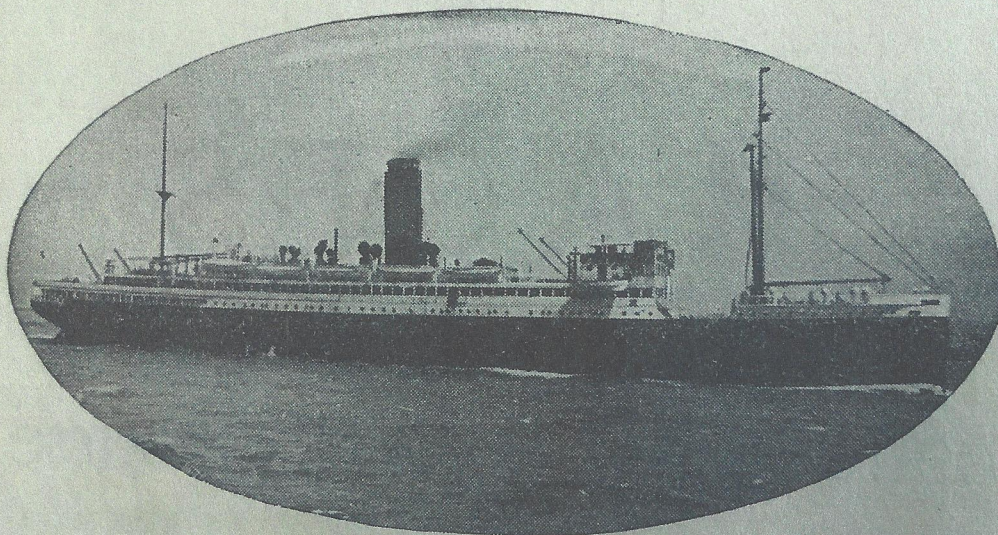
provided at
frequent intervals
throughout the season
December to April.

For particulars please address
F. W. E. PENISTON, D. V. S.
Secretary

The Bermuda & Garrison Hunt Club
Smiths Parish, Bermuda.

FURNESS-BERMUDA-LINE

Under Contract with Bermuda Government
 De Luxe Express Steamship Service
 Between New York and Bermuda
 Via Palatial, Twin-Screw, Oil-Burning
 S.S. "FORT VICTORIA" and
 S.S. "FORT ST. GEORGE"
 Each 14,000 Tons Displacement



S. S. "FORT ST. GEORGE."

The Furness-Bermuda Line Service

The Furness-Bermuda Line operate an all-year-round high-class New York-Bermuda steamship service with sailings twice weekly during Winter and Summer periods. The steamers of the Furness-Bermuda Line are especially fitted for this service and passengers are landed direct at Hamilton Dock. Tickets issued by the company or their agents are good on all steamers of the Furness-Bermuda Line, thereby offering passengers unequalled convenience in express sailings at frequent intervals.

For particulars of rates and sailing dates, write

FURNESS-BERMUDA LINE, 34 Whitehall Street, New York,
WATLINGTON & CONYERS, General Agents, Hamilton, Bermuda
 or any Local Tourist Agent.

Vacation Cruises

PASSENGER SERVICE TO
Hamilton, Bermuda
Nassau, Bahamas
Kingston, Jamaica
Belize, British Honduras

CANADIAN GOVERNMENT
MERCHANT MARINE, LIMITED

From MONTREAL Summer Season
From HALIFAX Winter Season

S.S. CANADIAN FISHER
S.S. CANADIAN FORRESTER

Reasonable Fares—Superior Accommodation—Excellent Cuisine.
Regular Sailings Every Three Weeks.

For Reservations Apply to
Canadian Government Merchant Marine Limited
MONTREAL, P. Q. HALIFAX, N. S. ST. JOHN, N. B.

JOHN J. BUSHELL

GENERAL AGENT

MERCHANDISE
INSURANCE
REAL ESTATE

HAMILTON,

BERMUDA

TELEPHONE 201

PUBLISHER OF GUIDE BOOKS, MAPS, ETC., PRESS CORRESPONDENT

ELDERS & FYFFES LIMITED

DIRECT PASSENGER SERVICE
Avonmouth, England
and Bermuda

(En route to Jamaica)

and Return

S. S. BAYANO

leaves Avonmouth every six weeks for
Bermuda direct, and calls at Bermuda on
return voyage.

Also when sufficient inducement offers special
calls of other steamers are arranged.

Fare England to Bermuda
or vice versa.

£35 single, £60 return

Bermuda to Jamaica, £15

HARNETT & RICHARDSON,
AGENTS,
Hamilton, Bermuda.

The Hamilton Hotel

HAMILTON, BERMUDA

Metropolitan comforts in a resort hotel of distinction.

THE Hamilton Hotel is the largest on the Islands, with accommodations for six hundred guests. Constructed of stone and cement, it is fireproof throughout and is equipped with every modern convenience for comfort. This equipment includes three elevators, telephones in all rooms, two hundred feet of glass enclosed sun parlors, palm garden, grill, etc.

The Hamilton is conducted on the American plan and caters to a discriminating patronage who demand and appreciate the best in cuisine service and modern methods of hotel operation. Four hundred outside rooms, two hundred and fifty with connecting bath.

The Hamilton Hotel Orchestra of soloists furnishes music for concert and dance and there is every facility for the enjoyment of outdoor and indoor recreation, including golf, tennis, swimming, boating and sailing.

The Hamilton is located on a plateau overlooking the beautiful Harbor of Hamilton and is in the centre of everything.

Operated by the
Hamilton Hotel Company, Ltd.

J. A. Sherrard, General Manager.

Cable address "Hotel Bermuda" all codes.

THE IDEAL WINTER RESORT BERMUDA

Princess Hotel

Open December 15th to May 1st

Situated directly on the Harbour. Offers the traveller of discrimination the ideal accommodation. Every requisite for convenience and comfort has been included in the equipment and service. Electric lights, elevator, room telephones, tiled swimming pool, grill room, spacious public rooms, tennis courts, saddle and driving Livery, yacht fleet, and Metropolitan Orchestra. Convenient to the golf courses.

Under the direction of
L. A. TWOROGER & CO.
HAMILTON, BERMUDA.

SUMMER RESORT
HOTEL ASPINWALL
LENOX, MASS.

JUNE 15th, OCTOBER 15th
THE HOTEL BEAUTIFUL OF THE BERKSHIRES

THE HOTEL BERMUDIANA

Bermuda's Newest Hotel

Most modern fireproof construction.

The Hotel combines the sites of three ancient Bermuda estates, about fifteen acres of native trees, shrubs, and charming gardens, and it stands on a Terrace which steps from a lofty height to the waters of Hamilton Harbour.

MAGNIFICENT VIEWS

of harbours and islands, or ocean and hills, from all rooms.

Every room has a telephone and is steam heated.

Especially distinctive features are embodied in the equipment of the lounge, grill room, a la carte and table d'hôte dining rooms, cafe, library, ballroom, and other general rooms.

ACCOMMODATION FOR 460 GUESTS.

Notwithstanding the high character of equipment, service and cuisine, the tariffs compare most favourably with those of leading hotels elsewhere.

Under the Management of
JOHN O. EVANS.

American House

HAMILTON, BERMUDA.



Open all the year.

MOST centrally located to all attractions.
Rooms single or en suite, with bath.
All modern conveniences. Excellent service.
Golf and all kinds of sports nearby. American
Plan. For rates and information address:

A. PASCHAL, Prop.

HOTEL INVERURIE

charmingly located on the waterfront
of Hamilton Harbour.

Accommodation for 200 guests.



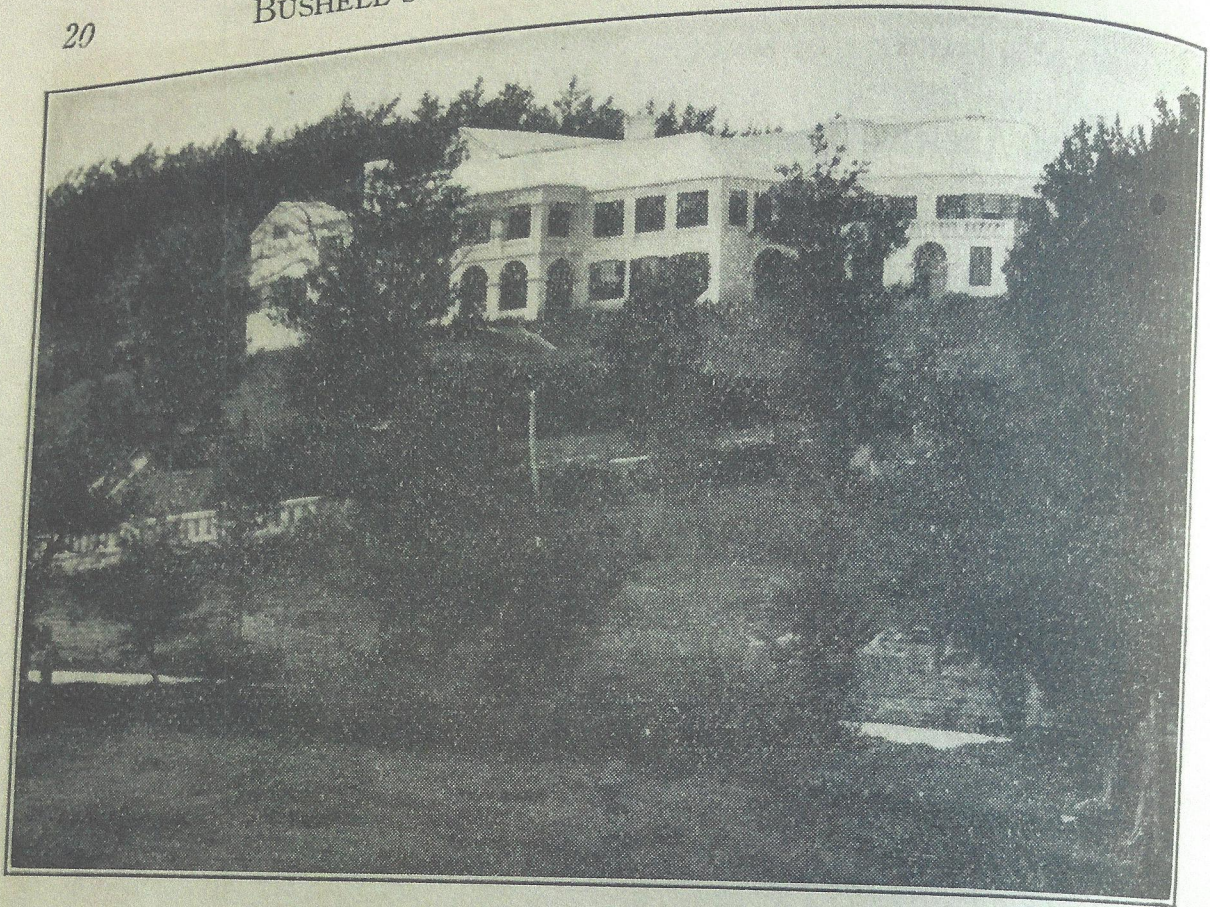
BATHING
BOATING
FISHING
GOLF
TENNIS
DRIVING
CYCLING
RIDING
DANCING
—
ORCHESTRA



Rooms en suite with private bath.
Best Cuisine in Bermuda.



STANLEY S. HOWE,
MANAGER.



THE POINCIANAS

DEVONSHIRE, BERMUDA

"Where Flowers perfume Ocean breezes"

An Hotel offering all the comforts of home
and the privileges of a well-appointed Club.

*Located in one of the most picturesque
sections of Bermuda 2½ miles from the
City of Hamilton overlooking the
beautiful South Shore.*

ADJACENT TO PRINCIPAL GOLF COURSES
Sea Bathing, Fishing, Boating
AFTERNOON TEAS

Special Luncheon and Dinner Parties
by appointment

Rooms en suite. Hot and Cold Running fresh Water.
AMERICAN AND EUROPEAN PLANS.

Accommodation for 32 Guests. Rates on application.

REGINALD H. TYRER, Proprietor
Cables: Poincianas, Bermuda.

Tel. 443A

THE ST. GEORGE HOTEL

A Modern Hotel
in an ancient setting

Open throughout the year.

The St. George Hotel stands on an eminence commanding a magnificent panorama of the Town and Harbour of St. George's.

**Standard of service and
cuisine will satisfy the
most discriminating guest.**

MAGNIFICENT TILED COVERED SWIMMING POOL
Music room provides one of the largest
dancing floors in Bermuda.

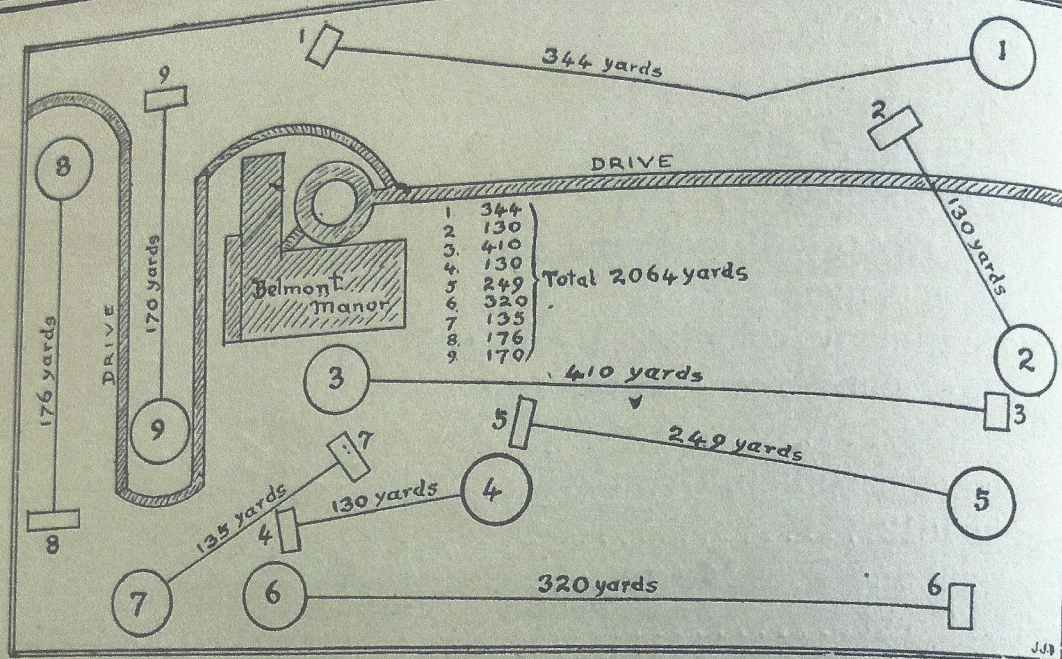
EXCELLENT ORCHESTRA.

**Cruises and Sea Garden Trips
in motor boat "St. George".**

Guests for the St. George Hotel are transferred between Furness-Bermuda Line Steamer and St. George's without the delay and expense of proceeding to Hamilton and thence by carriage to St. George's.

**Military Officers' Nine Hole Golf
Course adjoins the Hotel.**

OPERATED
BY FURNESS, WITHY & CO.
Acting Manager: **FRED EVANS.**



Belmont Manor and Golf Club

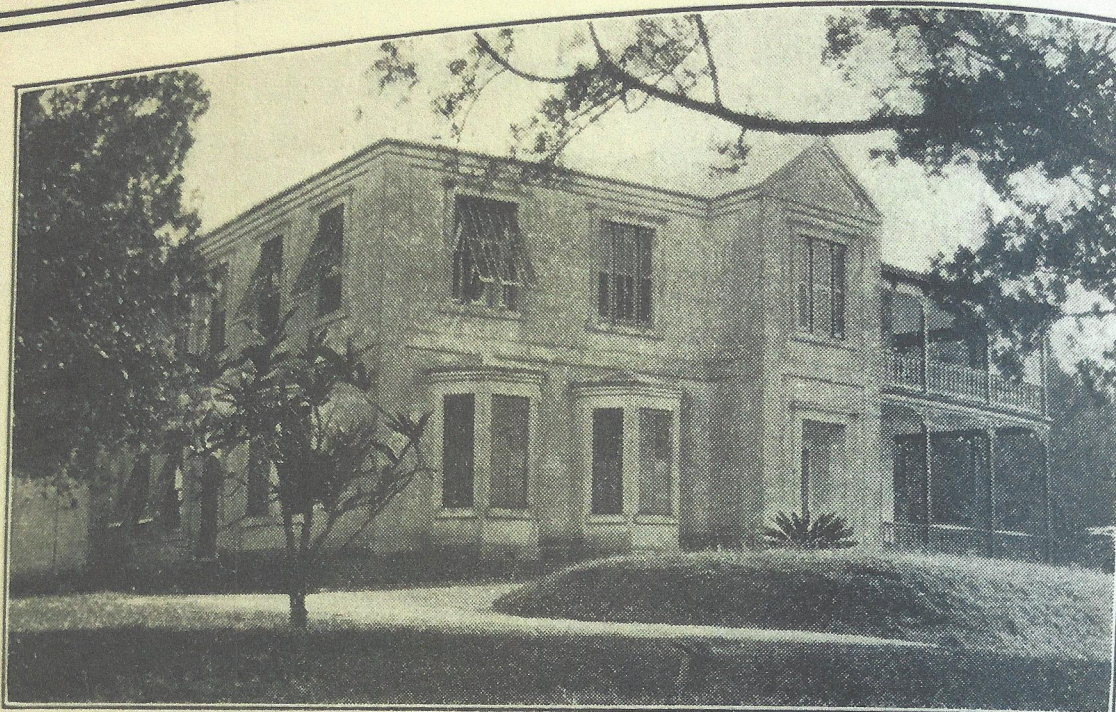
A Mid-Ocean Haven for Golfers
operated the year round on American plan.

A. P. THOMPSON, Manager.

Restful and
quiet environment:
unobtrusive service.

ORCHESTRA.
TENNIS.
FISHING.
BOATING.
BATHING.
DRIVING.
RIDING.
CYCLING.
DANCING.

Guests of Belmont Manor automatically become members of
THE RIDDELL'S BAY COUNTRY CLUB, one of the finest eighteen hole
GOLF LINKS.



INGLEWOOD

PAGET EAST, BERMUDA.

"A Home — Not a Hotel"

MANAGER: F. J. ROWLEY.

INGLEWOOD offers to persons of discrimination the dignified and comfortable refinement to which they are accustomed in their own homes. It stands in extensive grounds amidst charming surroundings, affording privacy impossible in, yet coupled with the service facilities of, a first class hotel. There are large double bed-rooms with private baths, and in some cases private verandahs. There are delightful suites in quaint cottages adjacent to "Inglewood" and in its own grounds. Hot and cold running fresh water available in all rooms. Tennis Courts adjoin the main building. A high standard is set in every detail, and the cuisine is no exception. Home-grown vegetables and fresh eggs are supplied for the table. All this within five minutes of Hamilton, the shopping and social centre of Bermuda. Twenty persons can be accommodated in this charming "Home from Home".

OPEN ALL THE YEAR ROUND

GRASMERE-BY-THE-SEA

Fairyland

Bermuda



Beautifully situated on the waterfront

ALL OUTDOOR AMUSEMENTS:

*Boating, Bathing, Fishing, Tennis
Croquet and Golf.*

EXTENSIVE GROUNDS.

*Fresh fruits, vegetables, milk and
eggs supplied from our own farm.*

RATES MODERATE

Address

M. DALLMANN

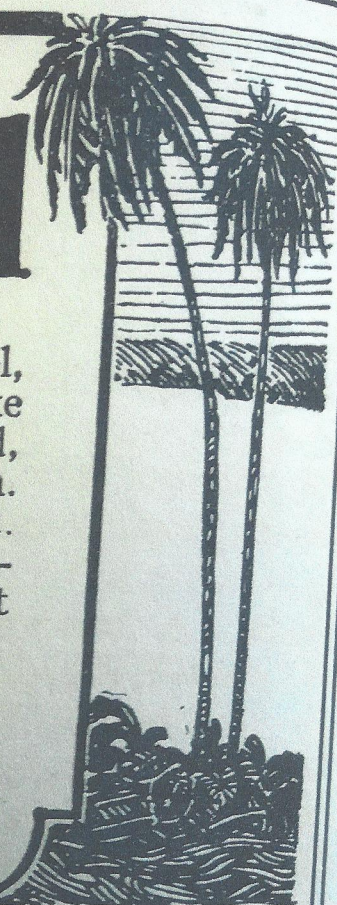
TELEPHONE

The Hotel Imperial

BERMUDA'S favorite family hotel,
and one of the most homelike
on the Islands. Beautifully located,
in a quiet section, in the City of Hamilton.
Near all attractions and points of interest.
Modern equipment throughout. Delight-
ful sun parlor and ballroom. Excellent
table and service. American plan.

For Booklet and Rates, Address
R. H. BUCKLER, Manager.

Hamilton, Bermuda



Hotel Frascati

Situated at the entrance to Harrington
Sound.

Unequalled opportunities for boating,
bathing, fishing, sailing, golf, tennis,
bicycling, driving and saddle riding.

—DANCING—

Centrally located to all points of interest.
Sunny and airy rooms—many with bath.
Superb views of Land and Water Scenery

OPEN THROUGHOUT THE YEAR

Cables: Frascati, Bermuda.
Telephone No. 230

WM. H. WOOD
Manager.