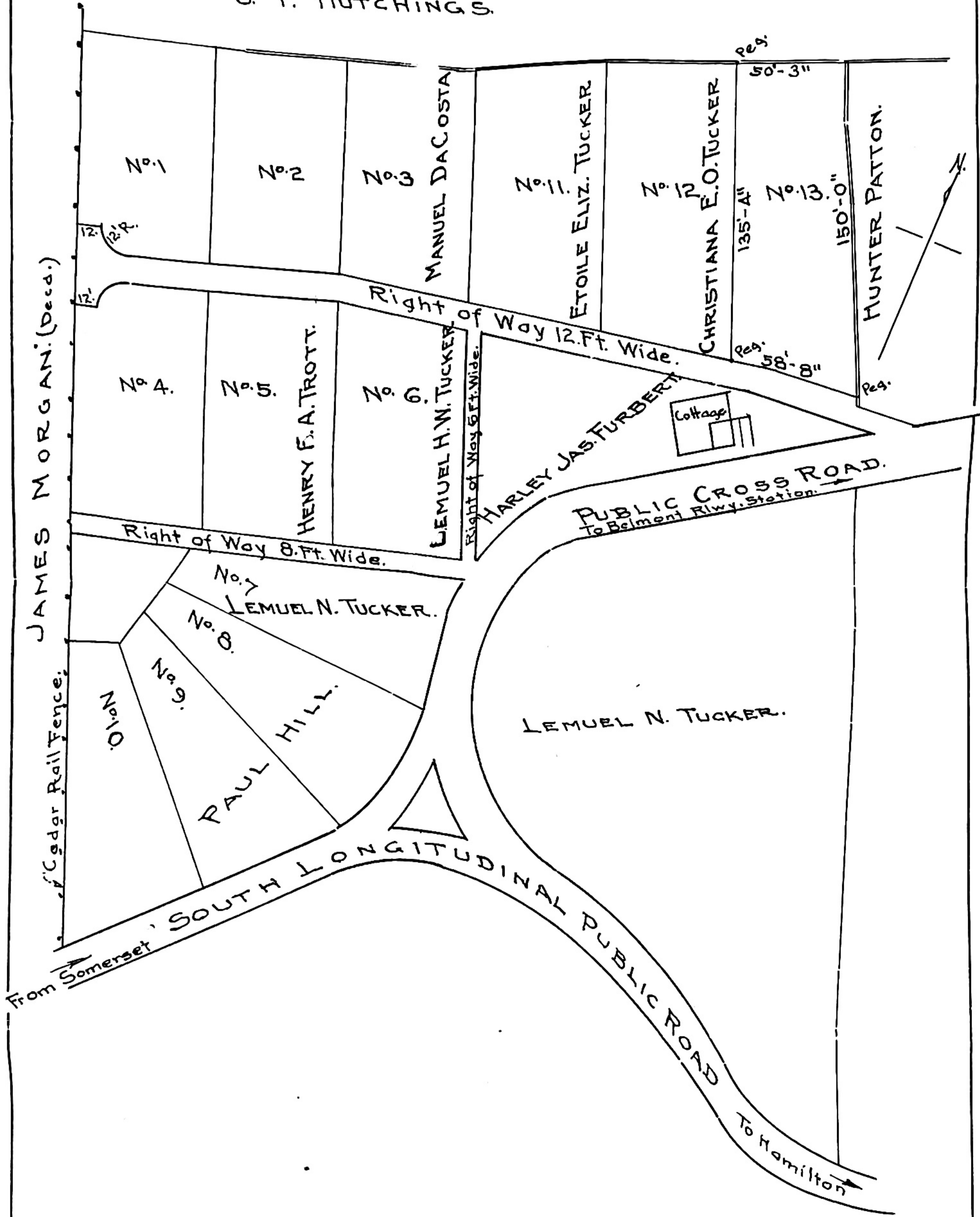


REFERRED TO IN THE ANNEXED INDENTURE.

PLAN OF A PORTION OF LAND
IN
WARWICK PARISH
BERMUDA

SCALE: 60 FT. TO 1 INCH.

J. F. HUTCHINGS.



Lemuel N. Tucker

Survey by N.A. Swan
Nov. 1933 Feb. 1939.

K
E
1
e